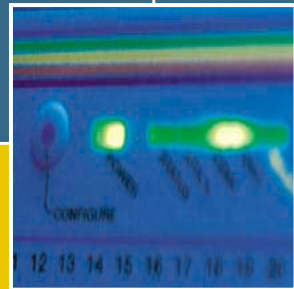
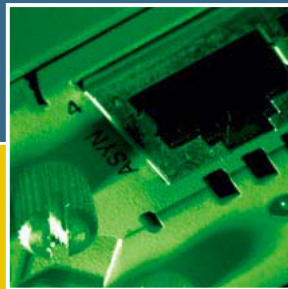
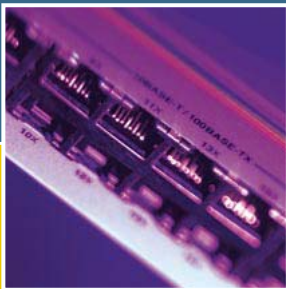


UPLINK MODULE

HARDWARE REFERENCE



Uplink Module Hardware Reference
Document Number C613-03061-00 REV A.

Copyright © 1999-2002 Allied Telesyn International, Corp.
19800 North Creek Parkway, Suite 200, Bothell, WA 98011, USA.

All rights reserved. No part of this publication may be reproduced without prior written permission from Allied Telesyn.

Allied Telesyn International, Corp. reserves the right to make changes in specifications and other information contained in this document without prior written notice. The information provided herein is subject to change without notice. In no event shall Allied Telesyn be liable for any incidental, special, indirect, or consequential damages whatsoever, including but not limited to lost profits, arising out of or related to this manual or the information contained herein, even if Allied Telesyn has been advised of, known, or should have known, the possibility of such damages.

All trademarks are the property of their respective owners.

Contents

Models Covered By This Reference	4
Why You Should Read This Reference	4
Where To Find More Information	4
Compatible Switch Units	5
Hardware Description	5
Uplink Module Overview	5
AT-A35/SX 1-port 1000BASE-SX (SC connector)	6
AT-A35/LX 1-port 1000BASE-LX (SC connector)	6
AT-A39 1-port 10/100/1000BASE-T (RJ-45 connector)	6
AT-A40/SC 1-port 100BASE-FX Multimode Fibre (SC connector)	7
AT-A40/MT 1-port 100BASE-FX Multimode Fibre (MT-RJ connector)	7
AT-A41/SC 1-port 100BASE-FX Singlemode Fibre (SC connector)	7
AT-A41/MT 1-port 100BASE-FX Singlemode Fibre (MT-RJ connector)	8
AT-A42/GBIC 1-port 1000BASE-X GBIC	8
Hardware Features Common To All Models	8
Gigabit Interface Converters (GBICs)	9
Troubleshooting	9
LEDs and what they mean	10
Port, Connector, and Cable Combinations	16
Contacting Us	17

Models Covered By This Reference

This Hardware Reference includes information on the following models:

- AT-A35/SX
- AT-A35/LX
- AT-A39/T
- AT-A40/SC
- AT-A40/MT
- AT-A41/SC
- AT-A41/MT
- AT-A42/GBIC

The latest Hardware Reference can be found at www.alliedtelesyn.co.nz/support/support.html.

Why You Should Read This Reference

This Reference has been developed to familiarise you with the hardware features of Uplink Modules. The Reference provides information that will assist you with the process of installing and maintaining Uplink Modules.



This Reference does not cover software configuration or physical installation procedures. For information on software, refer to the Software Reference for your switch unit. For information on installing an Uplink Module, refer to the Uplink Module Quick Install Guide. These documents can be found on the CD-ROM bundled with your switch unit, or at www.alliedtelesyn.co.nz/support/support.html.

Where To Find More Information

There are several sources of further information.

Information on Uplink Modules:

- The *Uplink Module Quick Install Guide*, which outlines the procedure for installing an Uplink Module; and the Hardware Reference for your switch unit, which provides detailed information on the unit's hardware features.

Information on Switches and Switching Routers:

- The *Hardware Reference* for your switch or switching router, which provides detailed information on the switch unit and its hardware features.
- The *Software Reference* for your switch or switching router, which provides detailed information on configuring the switch unit and its software.
- The *User Guide* for your switch or switching router, which provides an introduction to the switch unit's Graphical User Interface and its Layer 2 switching features.

Information on other expansion options for switches and switching routers:

- The *Network Service Module Quick Install Guide*, which outlines the procedure for installing an NSM; and the *Network Service Module Hardware Reference*, which provides detailed information on NSMs.
- The *Port Interface Card Quick Install Guide*, which outlines the procedure for installing PICs; and the *Port Interface Card Hardware Reference*, which provides detailed information on PICs.

All of these documents can be found on the Documentation and Tools CD-ROM bundled with each Switch or Switching Router, or at www.alliedtelesyn.co.nz/support/support.html.

Compatible Switch Units

This section lists all uplink module models, and indicates which switches each model can be installed in.

- AT-A35/SX: All Rapier Switches, Rapier *i* switches, and AR800 Modular Switching Routers
- AT-A35/LX: All Rapier Switches, Rapier *i* switches, and AR800 Modular Switching Routers
- AT-A39/T: All Rapier Switches, Rapier *i* switches, and AR800 Modular Switching Routers
- AT-A40/SC: Rapier G6 and G6F switches and all Rapier *i* switches
- AT-A40/MT: Rapier G6 and G6F switches and all Rapier *i* switches
- AT-A41/SC: Rapier G6 and G6F switches and all Rapier *i* switches
- AT-A41/MT: Rapier G6 and G6F switches and all Rapier *i* switches
- AT-A42/GBIC: All Rapier Switches, Rapier *i* switches, and AR800 Modular Switching Routers

Hardware Description

This section provides information on the hardware features of all Uplink Module models.

Uplink Module Overview

Uplink Modules allow extra ports and port types to be added to the switch. Uplink Modules also increase switching capacity by allowing switches to be linked.

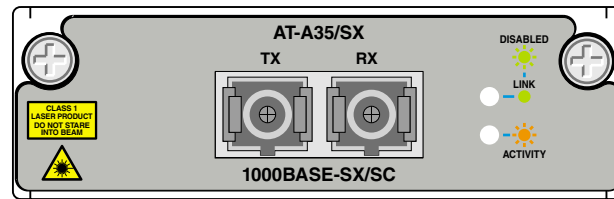


AT-82xx Expansion Modules are not compatible with AR800 Series Modular Switching Routers or Rapier Switches. Attempting to install an AT-82xx Expansion Module into an AR800 Series Modular Switching Router or Rapier Switch may damage the Switch Unit and Expansion Module. If you are unsure of a Module's compatibility, before installing it, contact an authorised Allied Telesyn distributor or reseller.

Uplink Modules currently available are:

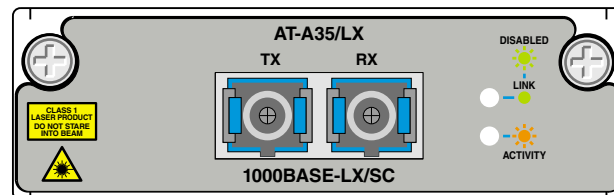
AT-A35/SX 1-port 1000BASE-SX (SC connector)

Figure 1: AT-A35-SX (SC) Uplink module.



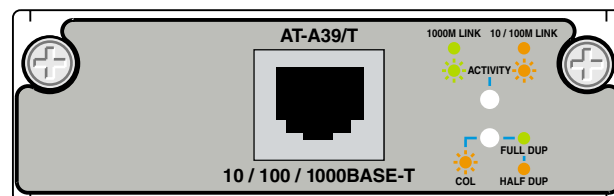
AT-A35/LX 1-port 1000BASE-LX (SC connector)

Figure 2: AT-A35-LX (SC) Uplink module.



AT-A39 1-port 10/100/1000BASE-T (RJ-45 connector)

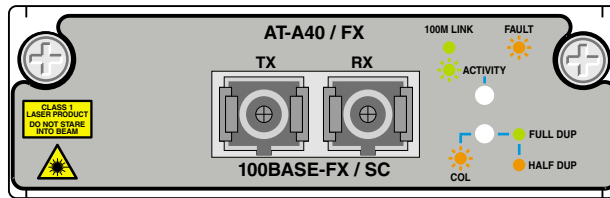
Figure 3: AT-A39-T (RJ-45) Uplink module.



- Early versions of the AT-A39/T operate at 1000 Mbps only
- 10/100/1000 Mbps operation is available only if the AT-A39/T Uplink Module is installed in a Rapier G6, Rapier G6F or Rapier *i* model, otherwise operation is fixed at 1000 Mbps

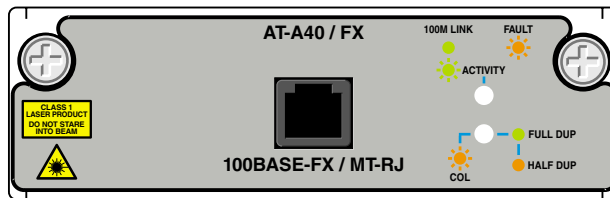
AT-A40/SC 1-port 100BASE-FX Multimode Fibre (SC connector)

Figure 4: AT-A40-FX (SC) Uplink module.



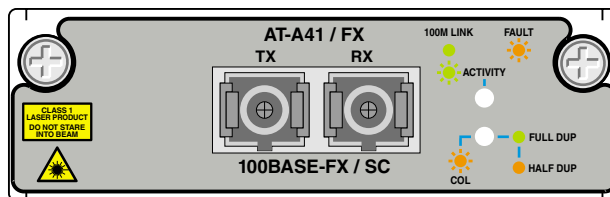
AT-A40/MT 1-port 100BASE-FX Multimode Fibre (MT-RJ connector)

Figure 5: AT-A40-FX (MT-RJ) Uplink module



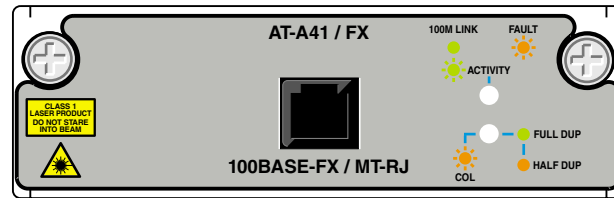
AT-A41/SC 1-port 100BASE-FX Singlemode Fibre (SC connector)

Figure 6: AT-A41-FX (SC) Uplink module.



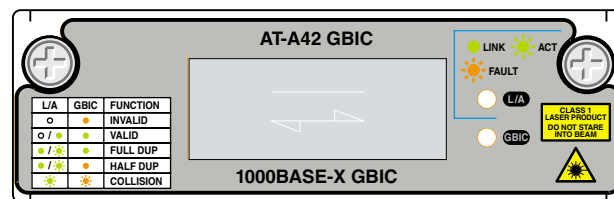
AT-A41/MT 1-port 100BASE-FX Singlemode Fibre (MT-RJ connector)

Figure 7: AT-A41-FX (MT-RJ) Uplink module.



AT-A42/GBIC 1-port 1000BASE-X GBIC

Figure 8: AT-A42-X (GBIC) Uplink Module.



Hardware Features Common To All Models

Environmental Conditions

- Operating temperature range: 0 to 40° C (32 to 104° F)
- Storage temperature range: -25 to 70° C (-13 to 158° F)
- Relative humidity range: 5 to 95% non-condensing

Regulatory Standards

AT-A35/SX, AT-A35/LX and AT-A39

- EMC: CISPR22 class A, FCC class A, and VCCI class I
- Immunity testing to EN50082 levels 2 (ESD), 3 (susceptibility), 4 (fast transients), 5 (power surge), and 6 (RF immunity)
- Safety: UL1950, CSA22.2, EN60950

AT-A40/SC, AT-A40/MT, AT-A41/SC, AT-A41/MT and AT-A42/GBIC

- EMC EN55022 class A, FCC class A, VCCI class I
- Immunity EN55024
- Safety UL, cUL and CE

LEDs

- For a complete list of LEDs and their functions, see “LEDs and what they mean” on page 10

Gigabit Interface Converters (GBICs)

The AT-A42/GBIC uplink module provides one GBIC slot. GBICs are removable gigabit port converters, and allow users to add and remove port types to meet changing network requirements. GBICs can be purchased when an AT-A42 uplink module is purchased, or can be ordered separately.

The following GBICs have been approved for use with AT-A42 uplink modules:

- Allied Telesyn AT-G8SX 550m SX
- Allied Telesyn AT-G8LX10 10km LX
- Allied Telesyn AT-G8LX25 25km LX
- Allied Telesyn AT-G8LX40 40km LX
- Allied Telesyn AT-G8LX70 70km LX
- Agilent HFBR5601 1000BASE-SX
- Agilent HFBR5611 1000BASE-LX

For the latest list of approved GBICs, visit www.alliedtelesyn.co.nz/products/options.html.



RX and TX terminal locations on SC fibre GBIC ports are the reverse of RX and TX terminal locations on fixed SC fibre ports. When looking at an SC fibre GBIC from the front, the RX terminal is on the left and the TX terminal is on the right.

GBIC 1000BASE-T Auto-Negotiation

1000BASE-T GBICs support only 1000 Mbps full duplex connections. Although 1000BASE-T GBICs will participate in auto-negotiation processes, they will only advertise 1000 Mbps. Half duplex, 10BASE-T, and 100BASE-TX modes are not supported.

While 1000BASE-T GBICs will auto-negotiate at the copper Ethernet level, the ports will behave as if in fixed 1000 Mbps full duplex mode. This is because the SERDES connection used by GBIC ports makes the auto-negotiation invisible to the switch, and so prevents a successful link negotiation.

When a 1000BASE-T GBIC is inserted into a GBIC slot, the port's auto-negotiation capability is disabled. This means that the port speed may not be set to "auto-negotiate". If the port had been configured to auto-negotiate (by default or by command) prior to the GBIC's insertion, then this configuration is overridden for as long as the GBIC remains in place.

Troubleshooting

This section provides information on how to detect and resolve the most common problems that can cause Uplink Modules to malfunction.

Other sources of troubleshooting information are:

- www.alliedtelesyn.co.nz.
- The Software Reference for your switch unit.

Performing the following tasks will eliminate the most common faults.

1. Check that the Uplink Module is correctly installed. See the Quick Install Guide for your switch for a step by step guide to installing Uplink Modules.
2. Make sure the power cord is securely connected to the switch unit and power outlet.
3. Check that the power supply voltage to the switch unit is stable.
4. Check that the correct data cables are being used and that their connections are secure.
5. Make sure that other network devices are working properly.
6. Use the SHOW INSTALL command to check that the latest software release is loaded. See your switch unit's *Software Reference* for more information about obtaining the latest software release.
7. If the switch unit is malfunctioning, reboot it by pressing the recessed Reset button or entering the command RESTART REBOOT. Alternatively, power OFF and ON the switch unit by disconnecting and reconnecting the main power supply (including, if connected, the RPS power).

If the Uplink Module continues to malfunction, see "Some common problems and how to solve them and follow" on page 14.

LEDs and what they mean

The following tables outline how Uplink Modules, AR800 Series Switching Routers, Rapier Switches, and Rapier *i* Switches report faults and operational activities.

LED Legend

- LED is On and Green
- ⦿ LED is Flashing Green
- LED is On and Amber
- ⦿ LED is Flashing Amber
- LED is Off.

Uplink Module LEDs

These LEDs are on the face-plates of respective Uplink Module models.

Table: 1 Uplink Module LEDs (AT-A35/SX and AT-A35/LX).

LED	State	Function
Link	Green	The port is receiving light
	Off	No link is present
Activity	Flashing Amber	Frames are being transmitted or received through the port
	Off	No activity is occurring

Table: 2 Uplink Module LEDs (AT-A39/T).

LED	State	Function
Full Dup/Half Dup/Col	Green	The port is operating at full-duplex
	Amber	The port is operating at half-duplex
	Flashing amber	Collisions are occurring
	Off	No link is present
Activity	Green	A 1000 Mbps link is open
	Flashing green	1000 Mbps activity is occurring
	Amber ¹	A 10/100 Mbps link is open
	Flashing Amber ¹	10/100 Mbps activity is occurring
	Off	No link is present

1. Early versions of the AT-A39/T operate at 1000 Mbps only. 10/100/1000 Mbps operation is available only if the AT-A39/T Uplink Module is installed in a Rapier G6, Rapier G6F or Rapier *i* model, otherwise operation is fixed at 1000 Mbps.

Table: 3 AT-A40/SC, AT-A40/MT, AT-A41/SC and AT-A41/MT LEDs¹.

LED	State	Function
Activity/Link/Fault	Green	A link is open and the port is enabled
	Flashing green	100 Mbps activity is occurring
	Flashing amber (and lower LED is Off)	The link has failed at the remote end
	Off	No link is present
Full Dup/Half Dup/Col	Green	The port is operating at full-duplex
	Amber	The port is operating at half-duplex
	Flashing amber	Collisions are occurring
	Off	No link is present
Both LEDs	Alternate flashing of upper and lower LED, amber	The switch does not support this model of uplink module

1. AT-A40 and AT-A41 Uplink Modules can only be installed in Rapier G6, G6F and Rapier *i* switches.

Table: 4 AT-A42/GBIC LEDs.

LED	State	Function
L/A Link/Activity	Green	A 1000 Mbps link is open
	Flashing green	1000 Mbps activity is occurring
	Flashing amber (and GBIC LED is Off)	A TX fault has occurred
	Off	No link is present
GBIC	Green	The switch has recognised the GBIC, the GBIC is a valid model
	Green (and L/A LED is flashing GREEN)	The port is operating at full-duplex
	Amber (and L/A LED is OFF)	The switch has not recognised the GBIC, the GBIC is not a valid model
	Amber (and L/A LED is flashing GREEN)	The port is operating at half-duplex
	Flashing amber (and L/A LED is flashing GREEN)	Collisions are occurring
	Off	No GBIC is installed, or a TX fault has occurred
Both LEDs	Slow alternate flashing of L/A and GBIC LED, amber	The switch has not recognised the GBIC, or the GBIC is not a valid model

Switch-Unit LEDs

The following tables may be helpful when diagnosing possible operational faults. These LEDs are on the front or rear panels of AR800 Series Modular Switching Routers, Rapier Switches, and Rapier *i* Switches.

Table: 5 System LEDs common to all AR800, Rapier, and Rapier *i* models.

LED	State	Function
Power	Green	The switch unit is receiving power and the voltage is within the acceptable range
Fault	Red	The switch unit or its management software is malfunctioning
	1 flash	A switch-unit fan has failed. (The LEDs will not indicate an RPS fan failure.)
	3 flashes	If an RPS is connected, the switch-unit's PSU (Power Supply Unit) has failed
	4 flashes	If RPS monitoring is enabled (using the SET SYS RPSMON=ON command), the RPS PSU has failed
	5 flashes	If RPS monitoring is enabled, an RPS is not connected
	Off	Normal operation
RPS ¹ (Redundant Power Supply)	Green	An RPS is connected to the switch unit
In use ² (Rear panel)	Green	An NSM is installed, is receiving power, and is operational
	Off	No NSM is installed, or the NSM is not installed correctly (the switch unit has not recognised the NSM)
Swap ² (Rear panel)	Green	The NSM and PICs can be hot swapped
	Off	The Hot Swap button must be pressed before the NSM or PICs can be hot swapped, or the software release does not support hot swapping ³

1. DC Switch and Switching Router models do not have RPS connectors and their RPS LEDs will not function.

2. Not included on the Rapier 48, G6, G6F/SX, G6F/LX, or G6F/MT.

2. Hot swapping is supported by software release 2.3.1 or later.

Some common problems and how to solve them

Link/Activity LED on Any Port is Off

This can indicate:

- A loose data cable.
- The device at the other end of the connection is not working properly or is turned off.
- The data cable is not wired correctly.
- The network administrator has manually disabled the port through the software.
- The port's selected transmission mode does not match that of the attached device.

Perform the following steps in sequence:

1. Make sure the data cable connections are secure.
2. Make sure the device at the other end of the connection is switched on and working properly.
3. Check that the data cable is wired correctly.
4. If you can, log in and check the port status. See your switch unit's Hardware Reference for more information about logging in.
5. If the port is Enabled, make sure the transmission speed matches that of the connected device (auto-negotiating, full or half-duplex).



If the port is disabled, someone has used the software to manually disable it. You should find out why the port was disabled before enabling it.

The Switch Unit's Power LED is OFF

This can indicate:

- A loose power cord.
- A power supply failure.

Perform the following steps in sequence:

1. Check that the power cord connection is secure.
2. Ensure that the supply voltage is within the 110/240VAC operational range.
3. If you can, log in and run diagnostics. See your switch unit's Hardware Reference for more information about logging in and running diagnostics.

Fault LED is On

This can indicate:

- There is a problem with the switch unit or RPS PSU.
- The switch unit or its management software is malfunctioning.
- A software download has been unsuccessful.
- A low power supply voltage.
- Switch-unit overheating due to a fan failure or extreme ambient temperature.

Perform the following steps in sequence:

1. Check Table 5 on page 13 for descriptions of the flashing sequences and what they mean.
2. Reset the switch unit by pressing the recessed RESET button on the front panel.
3. If you were attempting to download software or manage the switch unit via the RS-232 terminal Port, check that connections between the Terminal Port and local terminal or PC are secure.

If you cannot access the switch unit's software because of a faulty RS-232 Terminal Port connection, you can still manage the switch unit via Telnet or SNMP until the problem is fixed.

4. Unplug the switch unit and then plug it in again. If present, you will also have to disconnect and reconnect the RPS unit.
5. If you can, log in and run diagnostics. See your switch unit's Hardware Reference for more information about logging in and running diagnostics.
6. Download the latest software release. See your switch unit's Software Reference for more information on how to obtain the latest software release.

Port, Connector, and Cable Combinations

This section lists the recommended cable types and maximum cable lengths for each uplink module model.

Table: 6 Port, Connector, and cable Combinations.

Model	Port Type	Connector Type	Cable Type ¹	Maximum Cable Length
AT-A35/SX	1000BASE-SX	SC	50/125 micron multimode fibre	550m (1,804ft) ²
			62.5/125 micron multimode fibre	275m (902ft) ³
AT-A35/LX	1000BASE-LX	SC	9/125 micron singlemode fibre	3km (1.8mi) Increasing to 10km (6mi) if linking two 1000BASE-LX models
			50/125 or 62.5/125 micron multimode fibre	550m (1804ft) ²
AT-A39/T	10100/1000BASE-T ⁴	RJ-45	CAT5	100 to 150m
			CAT5E	(328 to 492ft) 200m (656ft)
AT-A40/SC	100BASE-FX (Multimode fibre, 1300nM)	SC	50/125 or 62.5/125 micron multimode fibre	2km
AT-A40/MT	100BASE-FX (Multimode fibre, 1300nM)	MT-RJ	50/125 or 62.5/125 micron multimode fibre	2km
AT-A41/SC	100BASE-FX (Singlemode fibre, 1300nM)	SC	9/125 micron singlemode fibre	15km
AT-A41/MT	100BASE-FX (Singlemode fibre, 1300nM)	MT-RJ	9/125 micron singlemode fibre	15km
AT-A42/GBIC	1000BASE-X	Varies with GBIC	Refer to GBIC's user documentation	Refer to GBIC's user documentation

1. Refer to the IEEE 802.3 Standards for further cable information.
2. Assumes a fibre optic cable rating of 500 Mhz/Km. (Maximum cable length is 500m at a cable rating of 400 Mhz/Km.)
3. Assumes a fibre optic cable rating of 200 Mhz/Km. (Maximum cable length is 220m at a cable rating of 160 Mhz/Km.)
4. Early versions of the AT-A39/T operate at 1000 Mbps only. 10/100/1000 Mbps operation is available only if the AT-A39/T Uplink Module is installed in a Rapier G6, Rapier G6F or Rapier *i* model, otherwise operation is fixed at 1000 Mbps.

Contacting Us

With locations covering all of the established markets in North America, Latin America and Europe, Allied Telesyn provides localized sales and technical support worldwide. To find our representative nearest you, visit Allied Telesyn on the web at: <http://www.alliedtelesyn.com>.