

Upgrading from 1.1.0 to 1.2.0

In order to upgrade the software starting from the current 1.1.0 to 1.2.0 follow these steps:

This assumes that the ip address of the 240E adsl router is 192.168.1.1

WARNING

This will force the router to come up with the factory default configuration. Please note all current settings used on the 240E before proceeding.

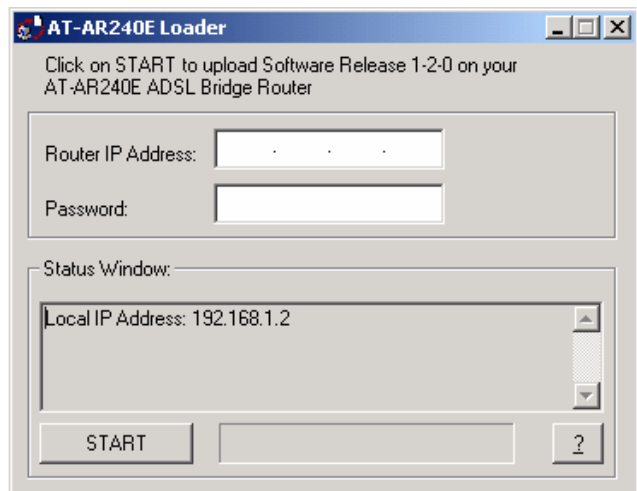
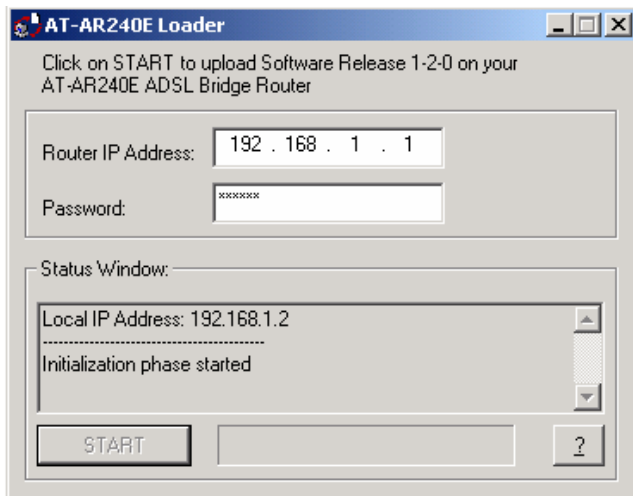
- 1) Set your PC with the following IP Address: 192.168.1.2
- 2) Connect your PC directly to the Router using a straight cable
- 3) Load the upgrade image into the router:
 - 3.1) Extract out the file AT-AR240E_Loader_1-2-0.zip using Winzip. www.winzip.com
 - 3.2) Double click the AT-AR240E_Loader_1-2-0.exe executable. The window to the right will open.

3.3) Please check that the IP address in the middle left is the PC ip address.

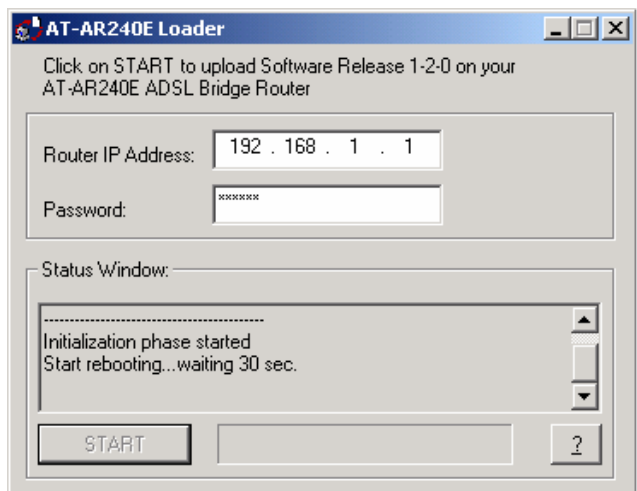
Please type the following settings

- Router IP address = 192.168.1.1
- Password = friend

Then press the Start button on the lower left. This button will grey once pressed.

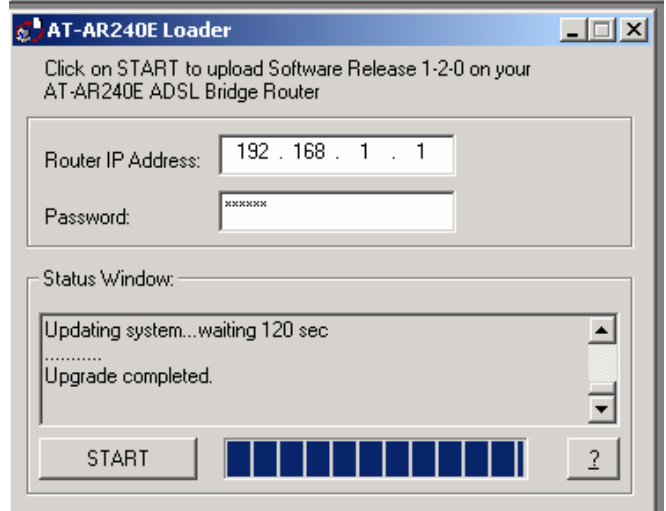
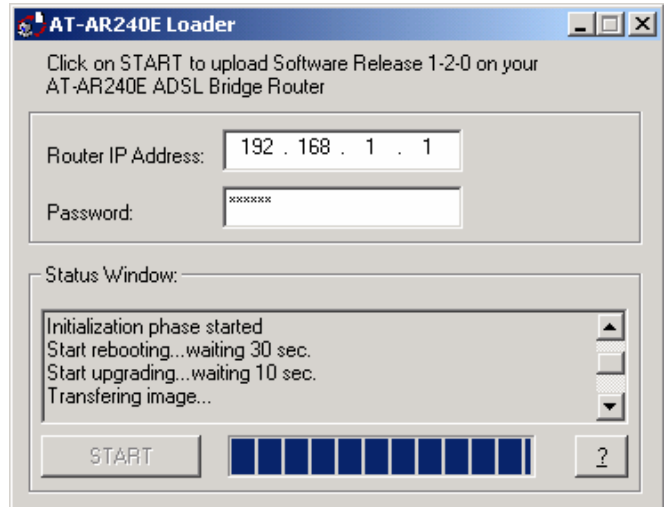
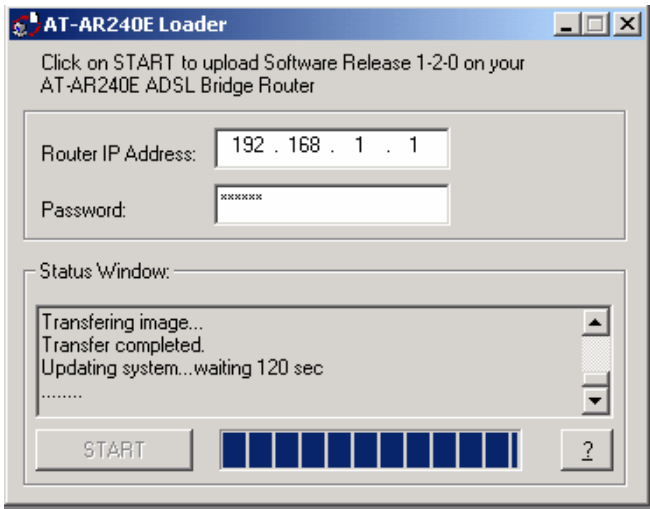


3.4) The upgrade process will first go through a initialisation process taking 20 seconds. Then the router will reboot taking 30 seconds. Please see the window below.



3.5) Once the router has rebooted the upgrade process will continue with loading the new software release. The Blue bar at the bottom shows how far through the file the router is. (Window to the Right)

3.6) The program will check the router which takes 120 seconds. The line of dots below the line "Updating system..." shows how far through the router is. (Window below)



3.7) When the router has finished it will state "Update Completed". (Window to the Right)

3.8) Now you should be able to browse (<http://192.168.1.1:8080>) into the new release. Username and password are:
 - manager
 - friend

The Release version is in a blue box at the top of the window under the yellow box that says "Allied Telesyn AR 240E"

